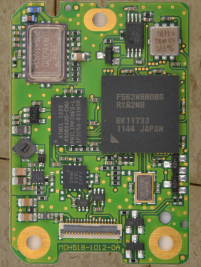


hermesTRX

Man Down Option Board



GPS based Man Down and Lone Worker System for MOTOTRBO™

hermes Man Down Option Board

GPS based Emergency Lone Worker Supervisory system with hermesTRX or in Standalone mode

The hermes Man Down Option Board is designed to be installed into the MOTOROLA™ range of MOTOTRBO™ hand portable radios. In the event that an employee becomes injured or falls unconscious, a 'man-down' notification is sent immediately to hermesTRX or to another radio.

The hermes man down option board works 'silently' in the background, enabling the user to utilize his portable radio as normal. Voice calls and data messaging are available just as before, however should the radio be placed at an 'unusual' angle, the radio will emit a pre-alert. Should the pre-alert not be acknowledged or the angle of the radio is not changed, an emergency alert will be sent to the dispatcher or emergency group of radios. A 'hot mic' facility can be activated as required.

To assist the 'search team' involved in the rescue, the radio will emit an audible tone for the duration of the emergency-cycle to ensure the downed employee is found as quickly as possible. The search team will use the audible tone as a 'beacon' to assist in the search process.

Voice Feedback Alerts: An example use-case when a user enters an area that he is not authorized to be, the radio triggers a pre-programmed voice message for example, "You

have entered a restricted area Please exit now."

The man down feature is available in hosted and non-hosted applications. In the hosted mode, the location of the worker is displayed on the digital map. Simultaneously, the worker's icon will change status to RED and an audible tone is played to draw the supervisor's attention to the urgent situation. In addition, should the radio be motionless for a pre-determined period of time, an alert will be sent to the hermesTRX Dispatch position warning of a potentially dangerous situation. In the non-hosted version the man-down emergency can be sent to a MOTOTRBO™ base radio or a group of radios in an 'emergency' group.

The hermes Man Down Option Board is available for the XPR6xxx, XPR7xxx and DP4/5/8xxx series MOTOTRBO™ portable radios.

hermes microcom • Phone +1 (617) 658-9976 or +49 (89) 21542390 • www.hermestrx.com

© 2018 Specifications subject to change without prior notice.

MOTOROLA is registered in the US Patent & Trademark Office. All other product or service names are the property of their respective owners.

AUTHORIZED
APPLICATION PROVIDER

MOTOTRBO™

MOTOROLA SOLUTIONS