



hermesTRX Tetra

Professional Fleet Management for Tetra

With the launch of hermesTRX enterprise, hermes microcom is continuing a success story which is without parallel in the Motorola application segment and has been awarded for the "Most Sold Positioning Application 2010" during the Motorola Conference in Hungary.

Equipped with new features such as Geo-Fencing and the integration of various digital mapping platforms, hermesTRX is leading the standards in the Motorola application world.

Geo-Fencing has been included to add a layer of certainty to the tracking operations of the fleet. In a typical school bus scenario for example, a fleet of buses will normally operate within a strict geographic area. Should a bus cross the demarcation line, an emergency alert will inform the dispatcher and enables the dispatcher to take appropriate action to ensure the safety of the bus and its passengers. The alerts to the dispatcher cannot only be sent as a normal emergency alert but can also be sent as an email.



Plug-and-Play

hermesTRX is a reliable fleet management solution that's easy to access, configure and operate through a built in web-server



Location

Real-Time GPS based Location Tracking with Speed Alarm, Geo-Fencing and flexible mapping engine



Reverse Geocoding

Reverse Geocoding enables the conversion of GPS



Text Messaging & Email

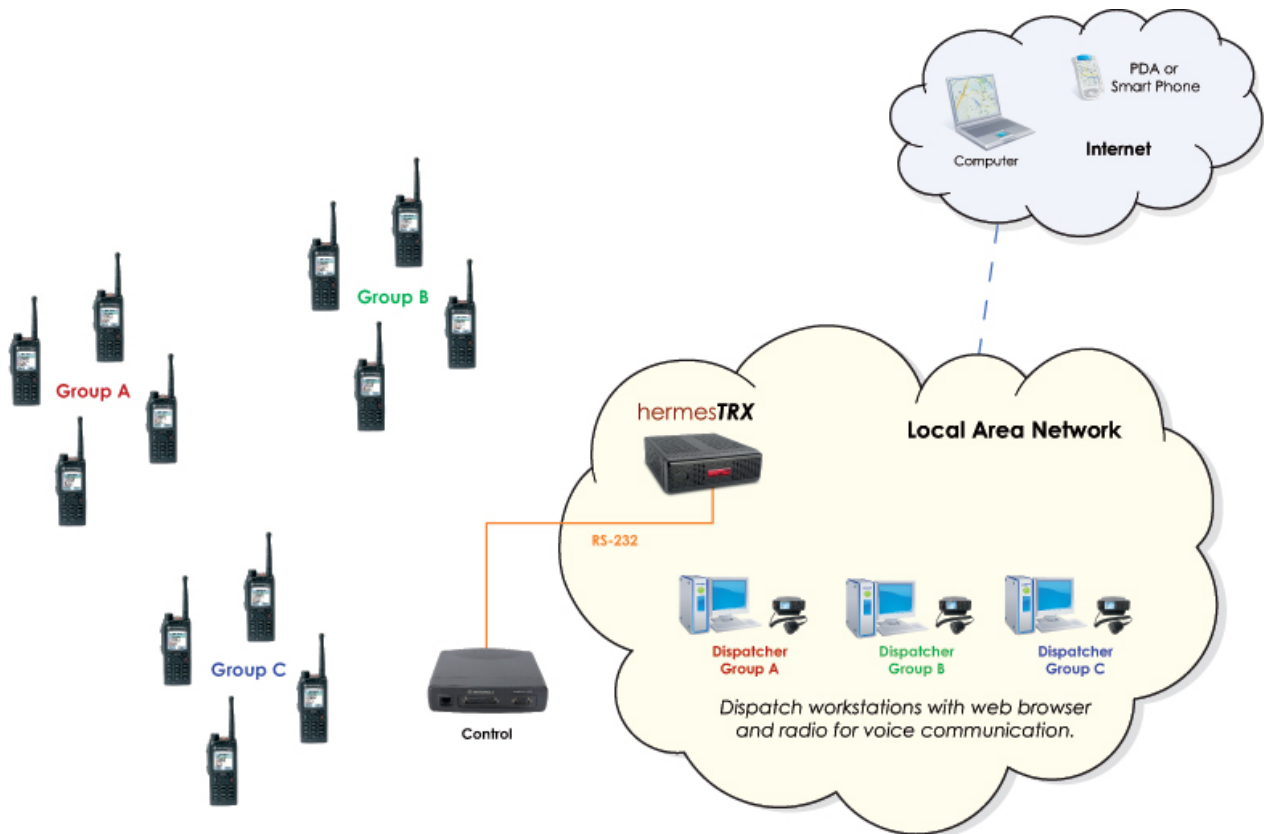
Web-based two-way text Messaging Service and email



Multiple User Groups

hermesTRX can facilitate multiple users using the hermesTRX simultaneously including group management





Features

Multi User Access and Remote Facility

Multiple users can access the system simultaneously from local or remote locations through an intranet/internet connected PC and a standard Internet browser.

Flexible Mapping Engine

Flexible Mapping Engine provides the option of choosing OpenStreetMap, ESRI, ArcGIS, National Geographic or Google™ Earth.

Multiple Geo-Fences

Enables a user to 'ring-fence' multiple geographical areas of a subscriber including "in" and "out" alarming modes.

Reverse Geocoding (Show address)

Enables an address to be shown rather than lat/lon. This will facilitate customers being able to readily identify where a vehicle has been, and at which address instead of GPS coordinates.

Registration Service, Job-Dispatching, Emergency-Email

here are various tools to assist the dispatcher in the coordination of a fleet. These are for example registration service, which provides an immediate overview of the status of each member of the fleet (color coded) and emergency indication via email

Recording and Playback

Built in record/playback capability to replay GPS location data for the radios being tracked.

No monthly recurring investment costs (opex)

With hermesTRX, there are no costs associated with software, map licenses or monthly recurring fees.

Job Ticketing

Integrated Job Ticketing management, enabling subscribers to accept or reject tasks and to notify the dispatcher once a task is completed.

Technical Data

- Outdoor GPS Positioning
- Built-in Web Server for Browser based Operation (Windows, Android, OSX, iOS and Linux)
- Compatible with Motorola™ Tetra Radios
- Can be operated under Windows, Android, OSX, iOS and Linux
- Scalable architecture
- Designed for 24/7 operation
- Multiple language selection
- Intel® Atom™ processor N2800
- Ethernet RJ45 interface
- Compact dimensions (WxHxD): 192 x 62 x 210 mm